

THE AIM DIFFERENCE

A PATIENT CENTERED ORGANIZATION

- No waitlist
- Same day appointments
- More comfortable
- Accommodating claustrophobic and larger patients

AIM EQUIPMENT ADVANTAGES

- Siemens Espree T-Class Open Bore MRI
- Only one of it's kind in Western Canada

Advanced Cancer Detection Sequences Available at AIM

AIM COMPANY ADVANTAGE

- A patient centered organization
- Opportunity to discuss your results with on site Radiologist for immediate answers
- Patients leave with report in hand and with key images that allow the referring physician to see abnormality promptly, to efficiently manage further treatment(s)
- Physician owned and operated

*Walk in with Questions,
Walk out with Answers!*

As a physician led operation, our philosophy is simple:

"Treat patients the way you want to be treated when you are a patient."



**complimentary underground parking available*

AIM offers Whole Body Cancer Screening with Advanced Cancer Detection Techniques.

100% Patient Satisfaction

"Excellent facility with a calm & professional attitude to patients. Full Body MRI offers great peace of mind."

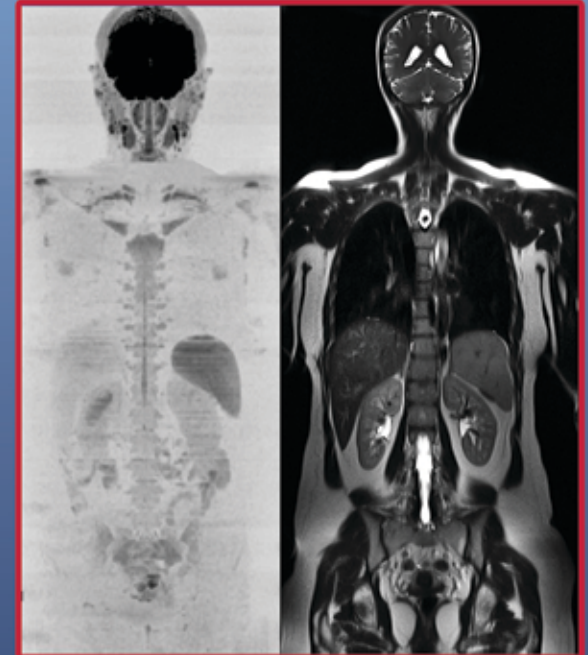
"Thank you for going the step further to locate the area causing the problem."

AIM Medical Imaging

1371 West Broadway
Vancouver, BC V6H 1G9
TEL 604.733.4007
TF 877.482.5859
FAX 604.734.2469

www.aimmedicalimaging.com
info@aimmedicalimaging.com

Experience the Future of Diagnostic Imaging



• Actual AIM patient images shown above

aim
MEDICAL IMAGING
— MRI CENTRE —



open 7 days a week
Medical Director • Dr. Raj Attariwala, MD PhD FRCPC FANM

WHOLE BODY SCAN

WHOLE BODY IMAGING

WHY MRI, AND NOT CT?

NO RADIATION

MRI's super conductive magnet and radio frequency pulses cause no known harmful effects. Unlike CT, MRI doesn't use ionizing radiation which is known to cause cancer and fetal abnormalities.

DISEASE DETECTION

MRI is more sensitive for the early detection of diseases and cancers.

PREPARING FOR AN MRI

No special preparation is needed prior to the exam, unless your doctor has given you other instructions. You will be asked to complete a safety screening form and answer questions pertaining to your medical history. At our clinic, you will be shown to a private room to change and remove the following:

- jewelry
- watches
- hairpins
- glasses
- wallets
- other metallic objects



WHOLE BODY IMAGING

Whole body imaging is the perfect screening tool for individuals who would like to check for early detection.

Whole body imaging can detect small brain aneurysms, brain masses, spinal stenosis, disc disease and Multiple Sclerosis (MS).

At AIM we offer advanced cancer detection techniques when screening your entire body from head to toe.



Listed below are a few of the many areas that we can detect:

BRAIN

- Aneurysms, Multiple Sclerosis (MS), brain masses and stroke

NECK & CHEST

- Tumors and metastasis

ABDOMEN

- Abnormalities of the liver, gall bladder, pancreas, kidneys, adrenals, spleen including cancers and other pathology

SPINE

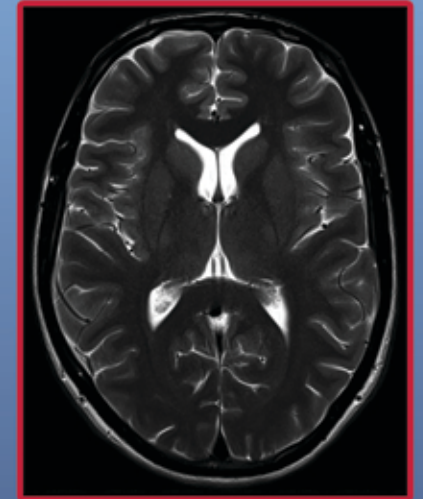
- Spine degeneration and disc herniation

PELVIS

- Gynecological and ovarian cancer

MUSCULOSKELETAL

- Primary bone lesions, metastasis, including spine, ribs and pelvis



FINAL RESULTS

You will have the opportunity to discuss your results with our on-site Radiologist for your full diagnosis and immediate report.



*Sometimes Peace-Of-Mind makes all the difference.
Call today for more information.*

Experience the Future of Diagnostic Imaging